

-SWING

MINOR SWING

-DJANGO

INTRO

Intro musical notation in 4/4 time. Chords: A-, D-, A-, D-. Includes triplets and a 'BASS BREAK' section with first and second endings.

SOLOS

Solos section with guitar and bass staves. Chords: A-, D-, E7, A-, D-, A-, E7, Bm7b5, E7. Includes slash notation for improvisation.

OUT HEAD

Out Head musical notation in 4/4 time. Chords: A-, D-, E7, A-. Includes a 'BASS BREAK' section and ends with 'FIN'.

16.

(199. 50000)

ALL OF ME

- SIMONS & MARKS

A

Cmaj7

∩

E7

∩

Musical staff 1 of section A, containing a melodic line with a triplet of eighth notes in the second measure.

A7

∩

D-

∩

Musical staff 2 of section A, continuing the melodic line.

E7

∩

A-

∩

Musical staff 3 of section A, continuing the melodic line.

D7

∩

D-7

G7

Musical staff 4 of section A, ending with a double bar line.

Cmaj7

∩

E7

∩

Musical staff 1 of section B, containing a melodic line with a triplet of eighth notes in the second measure.

A7

∩

D-

∩

Musical staff 2 of section B, continuing the melodic line.

F

F-

Cmaj7

E-7

A7

Musical staff 3 of section B, containing a chordal accompaniment line.

D-7

G7

C6

(Ebo

D-7

G7)

Musical staff 4 of section B, containing a chordal accompaniment line.

FINE

-SWING (ORIG. WALTZ)

DARK EYES

-TRADITIONAL

(LES YEUX NOIRS)

INTRO

D-6/9 C#-6/9 D-6/9
 Eb-6/9 D-6/9 D-MA9
 D-6/9 C#-6/9 D-6/9 Eb-6/9 D-6/9 C#-6/9 D-6/9
 Eb-6/9 D-6/9 D-6/9 BREAK ----- 3

The introductory section consists of four staves of music. The first staff shows a treble clef with a 4/4 time signature and a key signature of one flat. It features two measures of a D-6/9 chord, followed by two measures of a C#-6/9 chord and two measures of a D-6/9 chord. The second staff continues with Eb-6/9 and D-6/9 chords, followed by a D-MA9 chord. The third staff contains a sequence of chords: D-6/9, C#-6/9, D-6/9, Eb-6/9, D-6/9, C#-6/9, and D-6/9. The fourth staff starts with Eb-6/9 and D-6/9 chords, followed by a D-6/9 chord, a 'BREAK' indicated by a dashed line, and then a triplet of notes.

A

A7 D-
 A7 Bb
 G-6 D-
 A7 D-

Section A is a four-measure phrase in 4/4 time, one flat key signature. The first staff shows a melodic line starting with a repeat sign, with chords A7 and D- above it. The second staff continues the melody with chords A7 and Bb. The third staff shows the melody with chords G-6 and D-. The fourth staff concludes the phrase with chords A7 and D-.

I'LL SEE YOU IN MY DREAMS

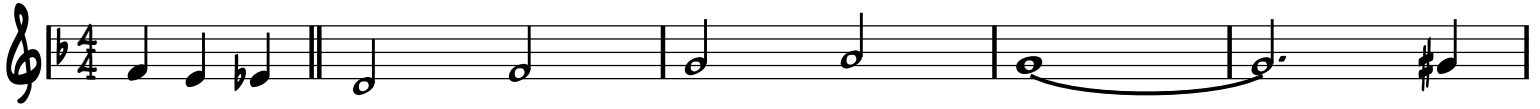
-SWING

-JONES & KAHN

A

B^b

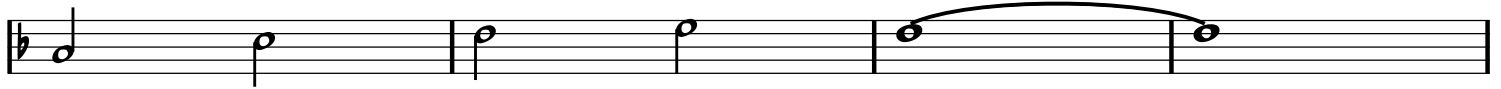
B^b-6



F

E7

F



D7



G7

G-7

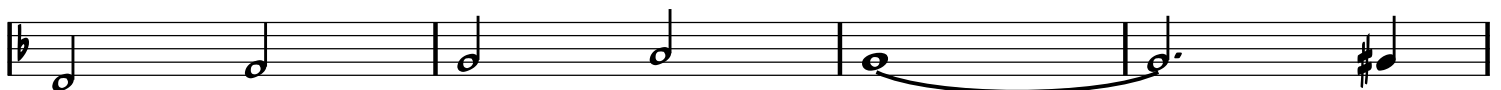
C7



B

B^b

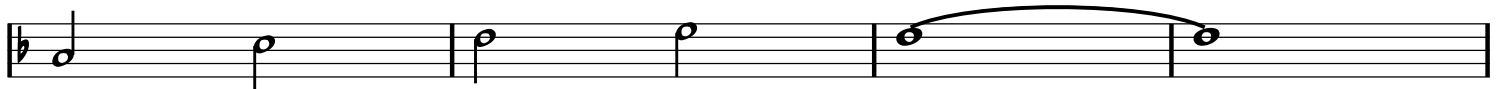
B^b-6



F

E7

F



D7

A7

D-



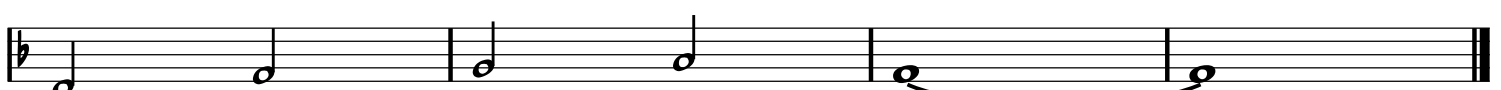
B^b

B07

C7

F

F7



BOSSA DORADO

-GYPSY BOSSA

-DORADO SCHMITT

INTRO/
OUTRO

D- D-(b6) D-6 D-(b6)
D- D-(b6) D-6 Eø7 A7

A

D- E7
Eø7 A7 D-7 Eø7 A7

A

D- E7
Eø7 A7 D-7

B

Aø7 D7 G-
E7 Eø7 A7

A

D- E7
Eø7 A7 D-7 Eø7 A7

-PLAY OUTRO LAST TIME

-MED. SWING

SWING 42

-DJANGO

A

Chords: C A-7 D-7 G7 E-7 A-7 D-7 G7

Chords: G-6 A7 D-7 G7 C A-7 D-7 G7

A

Chords: C A-7 D-7 G7 E-7 A-7 D-7 G7

Chords: G-6 A7 D-7 G7 C F#-7 B7

B

Chords: E C#-7 F#-7 B7 E C#-7 F#-7 B7

Chords: E C#-7 F#-7 B7 E D-7 G7

A

Chords: C A-7 D-7 G7 E-7 A-7 D-7 G7

Chords: G-6 A7 D-7 G7 C C#07 D-7 G7

-UP SWING

SWING 48

-DJANGO

G-6

C-6 **G-6**

Eb7 **D7** **G-6**

-SWING

COQUETTE

-GREEN, KAHN, LOMBARDO 1928

A

Musical notation for section A, first system. Chords: D, E-7, A7. The melody consists of quarter and eighth notes in a 4/4 time signature.

A

Musical notation for section A, second system. Chords: E-7, A7, D, B7, E-7, A7. The melody continues with quarter and eighth notes.

B

Musical notation for section B. Chords: A-7, D7, G, B-7, E7, E-7, A7. The melody features triplet markings over the D7 and G chords.

A

Musical notation for section A, third system. Chords: D, E-7, A7, E-7, A7, D, B7, E-7, A7. The melody concludes with quarter and eighth notes.

-SLOW SWING

BLUE DRAG

-JOE MYROW

A

D- /C Bø7 Bb7 D- /C Bø7 Bb7

A

D- Eø7 Bb7 A7 D- A7

B

G- D-

A

D- /C Bø7 Bb7 D- /C Bø7 Bb7

A

D- Eø7 Bb7 A7 D- A7

-SWING

HUNGARIA

-DTANGO

INTRO

G D7/A G/B C-6 G/B D7/A G

A

G A^b

G E7

A7 D7+

G/B B^b07 A-7 D7

B

G A^b

G E7

A- C-6 G/B E7

A-7 D7 G G#07 A-7 D7